

SOL-CARE™

Safety Blood Collection

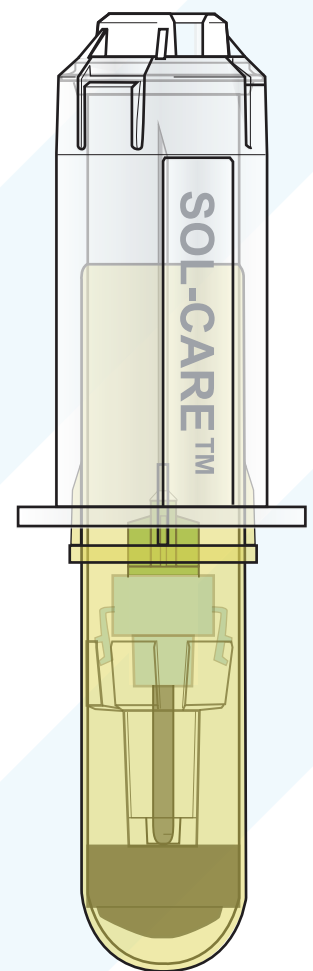
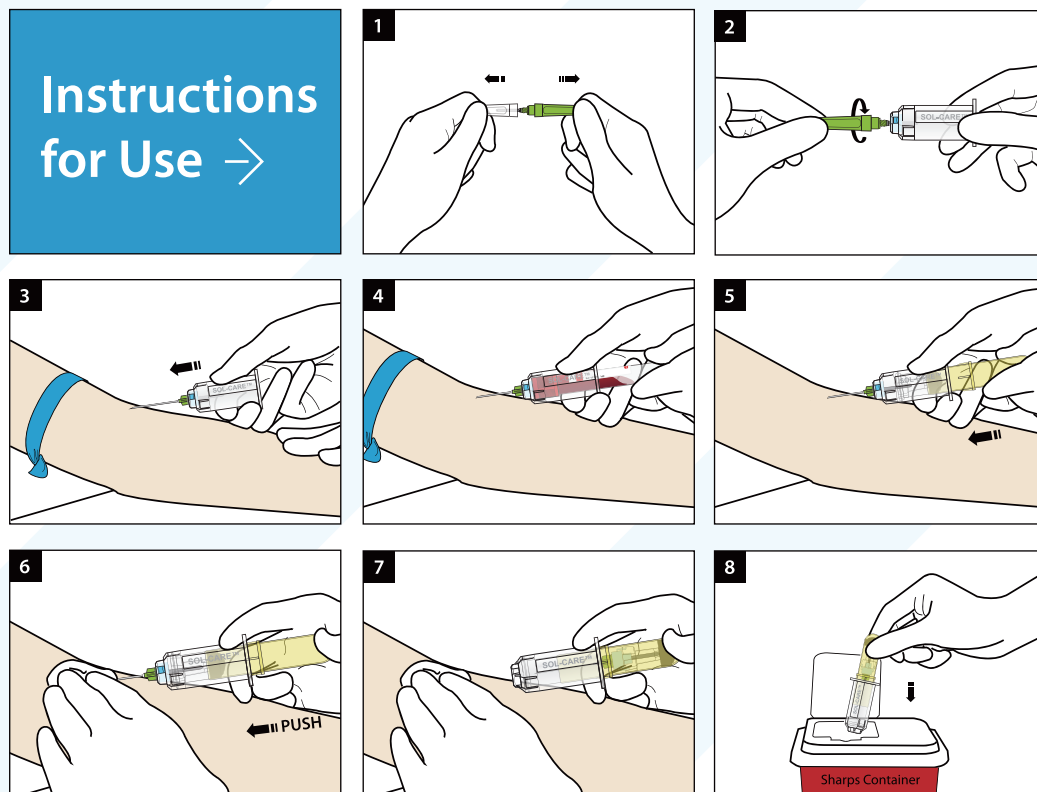
Tube Holder Set



Helps to reduce the risk of sharps injuries in healthcare workers.

Helping you to implement OSHA regulations and the EU Directive

- Minimal change in practice since the safety mechanism is an integral part of the device and does not obstruct vision of the tip of the needle. The SOL-CARE safety blood collection tube holder set features a blood collection tube holder and a vacuum activation tube.
- Compatible with standard multi-sample blood collection needles, no requirement to procure specialized needles.
- Reduces user exposure to the contaminated needle since activation of the safety device means the exposed sharp is permanently covered after use and prior to disposal.
- Easy to use - both hands remain behind the needle when activating the safety mechanism.



REF

Description

Qty

7001BCD

Blood Collection Device

50/Box; 400/Case



SOL-MILLENNIUM®
Building a healthier tomorrow

Shanghai Office:

Room 2202, No. 58 Changliu Road
Pudong, Shanghai, China, 200135
Tel: (86 21) 6862 2586
Fax: (86 21) 6862 2585
E-mail: info@sol-m.com

North America Office:

5415 Sugarloaf Parkway, Suite 2203
Lawrenceville, GA 30043
Tel: 404.973.2200
Fax: 404.973.2212
E-mail: info@sol-m.com

Europe Office:

Twarda 18, PL-00105 Warszawa
Tel: +48 22 202 67 23
Fax: +48 22 202 67 19
E-mail: info@sol-m.com

Brasil Office:

Rua Virgílio de Carvalho Neves Neto
1065 Ribeirão Preto
São Paulo Brasil 14.092-440
Telephone: 55 16 3442 1454 / 55 11 984060126
E-mail: info@sol-m.com

SOLUTIONS FOR SAFETY®

Distributed in Canada by:
DOMREX PHARMA INC.
3232 Jacques-Bureau
Laval (Quebec) Canada
H7P0A9
el: 1-888-687-0990
info@domrexpharma.com
www.domrexpharma.com

